

The Atlas Copco logo, consisting of the brand name in a white serif font centered between two horizontal white bars, all set against a teal square background.A worker in a blue uniform, wearing a blue hard hat, safety glasses, and large grey earmuffs, is using a blue and black Atlas Copco air compressor. The worker is wearing white work gloves and is spraying a white substance onto a road surface. The background shows a road with white lane markings and a blurred landscape.

Low pressure large air compressors

XAS 1800 PACE CAT

1800 - 1400 CFM; 75 - 200 PSI

Low pressure large air compressor



Flow to footprint ratio

The XAS 1800 PACE offers the largest flow of air and a wide range (72-200 psi) of working pressures with the lightest and smallest footprint in the market.



Maximum uptime

The XAS 1800 PACE was designed with the operator in mind as it is easy to control (even remotely), transport, refuel and service so your uptime is maximized. Extended service intervals (500 hours for the engine and 1000 hours for the compressor), make these compressors the workhorses of your fleet.



Boost your return on investment

These energy-efficient workhorses tackle applications such as drill and blast, shallow depth drilling, plant back-up air, abrasive blasting, pipeline pigging, drying and purging. Aligning pressure or flow per application not only increases versatility but also overall performance. In addition, fuel efficiency is best-in-class for all pressure settings.



Customized to your needs

Aftercooler, water separator, and filters come as standard always. The expertise in delivering options and the capability to design that is in line with your company branding enables us to offer optimization as per your business's requirements.

XAS 1800 PACE

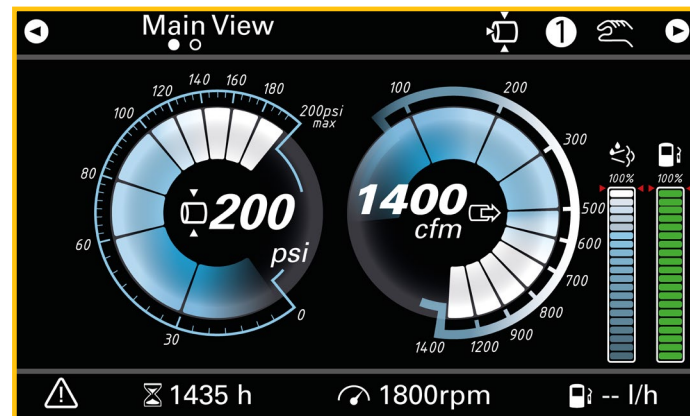
- Flow: 1400 up to 1800 cfm
- Pressure: 75 up to 200 psi



Stop compressing air – start controlling it!

Smart Air Xc4004 controller

We believe a controller should put you in complete control, while being intuitive, and most importantly easy to use and navigate.



- Easy to use interface
- Powerful insights increase uptime
- Save time through use of remote control

Advanced features:

- Smart user interface with key parameters at first sight
- Mirror application for remote control
- Audible, clear warning system for any deviations
- Robust design which resists water and dust (IP67 rated)
- Takes efficiency, control and connectivity to the next level



Intuitive control with powerful insights

- Intuitive and easy to use
- Simultaneous view of pressure and flow
- On-board histogram of 15 parameters
- 7 inch screen
- IP67 rated

Remote controller

- Optional mirror box for remote control operation

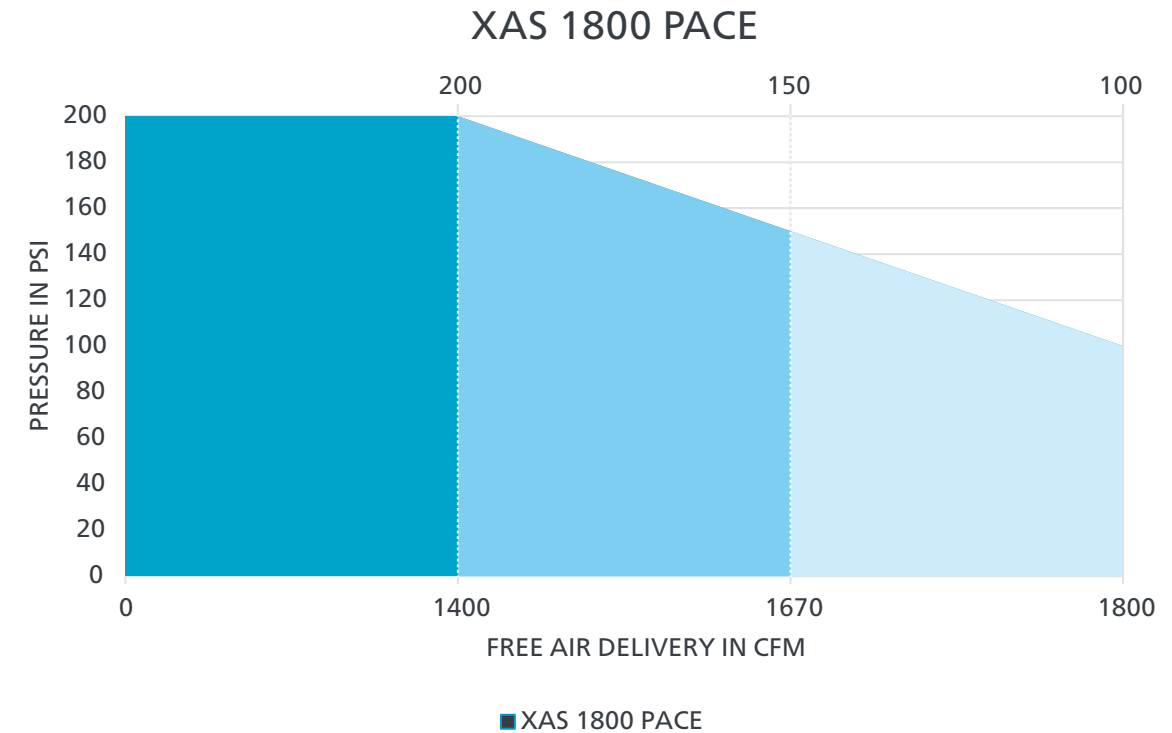
FuelXpert

- Reduces fuel consumption to up to -10% at 75% load
- Lowers operational costs, increases project profitability

Features and benefits

Does your compressor have PACE?

PACE technology redefines the relationship between pressure and flow. A compressor with PACE technology can cover the application needs of, on average, three fixed pressure compressors.



What PACE is:

- An electronic regulation system programmed via a digital controller
- A system that offers the widest operating pressure range within a single compressor allowing multiple pressure and flow combinations
- ECO mode greatly improves fuel economy during unload, no-load operation and allows for auto-start, auto-stop control without additional hardware
- A system that gives you the versatility of three machines in one package
- The new Cat C13B engine supplies remarkable power and torque in a smaller, lighter package

XC 4004 controller

- Intuitive and easy to use controller
- Built-in logics safeguard the engine through warm-up and cool down timers
- Easy diagnostics for troubleshooting

Quality Air

- Aftercooler condensate is routed to the exhaust where it is then atomized in the exhaust stream using a stainless steel nozzle
- This further reduces noise and eliminates oil/water contamination on the worksite
- PFF system provides .001 micron clean dry air with 20 degree approach aftercooler

Heavy duty enclosure

- Bumper protection
- External lifting eye
- 2 layer corrosion protection for canopy and frame
- Easy to service

Applications include:



Pipeline drying



150 psi: Abrasive blasting



Shotcrete applications



Cluster drilling

Condensate flashing:

Solution:

- Condensate is directly injected into the engine exhaust stream (after exhaust treatment system)
- The condensate is vaporized by exposure to hot exhaust gas

Intuitive user operation:

- Toggle between the presets in a simple click
- Custom pressure can be set in 3 simple clicks
- Pressure can be adjusted in increments of 2 psi

FleetLink

Our intelligent telematics system designed to remotely monitor and manage your machine(s). Everything is a click away while also allowing you to:

Optimize Fleet Utilization

Provides a clear overview of your machines' functionality for peak fleet efficiency.

Increase Fleet Productivity

Receive proactive service due notifications avoiding downtime while also reaping the benefits of increased awareness and planning of required maintenance, anticipation of unprecedented interventions and decreased maintenance costs.



Increased Fleet Efficiency

Monitor and manage equipment amping up operations and reducing operating costs.

Remotely view critical controller data such as alarms, fuel consumption, battery voltage, vessel pressure etc.

A connectivity solution managed proactively making your fleet more productive and saving valuable time and money!

Technical data

| XAS 1800 CAT | | |
|-----------------------------------|--------|------------------|
| Normal effective working pressure | PSI(G) | 100 - 200 |
| Minimum working pressure | PSI(G) | 75 |
| Free Air Delivery | CFM | 1800 - 1400 |
| Fuel consumption @100% | GAL/H | 24 |
| Max sound power level (Lpa) | DB(A) | 76 |
| Capacity of compressor oil system | US GAL | 30 |
| Max. Ambient temperature | °F | 120 |
| Min. Ambient temperature | °F | -13 |
| Engine | | |
| Engine type | | Caterpillar C13B |
| Emission regulation | | T4F |
| Max. Power | HP | 536 |
| Oil capacity | US GAL | 11.97 |
| Dimensions | | |
| Dimensions | IN | 235x88x101 |
| Fuel tank capacity | US GAL | 223 |
| Weight (wet) | LBS | 19000 |

Standard features

- XC4004 Controller
- FuelXpert
- PACE
- Eco Mode
- Integrated air treatment with aftercooler, water-separator and coalescent filters
- Cold weather equipment
- FleetLink

Options

- Skid-mounted
- Remote control with use of a mirror box
- Custom colors
- UN31A Fuel tank

Power Technique Solutions Portfolio

Atlas Copco's Power Technique Business Area has a forward-thinking philosophy. For us, creating customer value is all about anticipating and exceeding your future needs – while never compromising our environmental principles. Looking ahead and staying ahead is the only way we can ensure we are your long term partner.

Air compressors

Ready to go



- 110-250 cfm
- 58-125 psi

Versatility



- 400-900 cfm
 - 58-200 psi
- *Diesel and electric options available

Productivity partner



- 950-1800 cfm
 - 100-508 psi
- *1000-5000 psi with Boosters

Generators

Portable



- 1.6-12 kVA

Mobile



- 25-1200* kVA

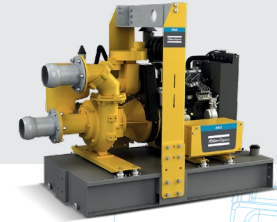
Dewatering pumps

Electric submersible



- up to 6,100 g/min

Centrifugal diesel driven



- up to 6,155 g/min

Light towers

Metal halide



LED



Photos and illustrations contained herein might depict products with optional and/or extra components which are not included with the standard version of the product and, therefore, are not included in a purchase of such product unless the customer specifically purchases such optional/extra components. We reserve the right to change the specifications and design of products described in this literature without notice. Not all products are available in all markets.

Atlas Copco

Atlas Copco Power Technique
atlascope.com/ptba